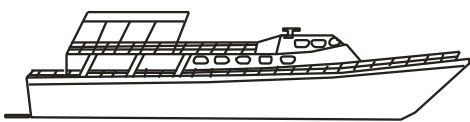


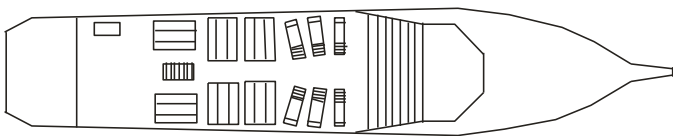
# DISCOVER THE WORLD OF PANTERRA

## The MV Adventure – Ship Layout



---

### THE UPPER DECK



The upper deck is ideal for wildlife viewing, relaxing with cocktails and hors d’oeuvres, watching sunrises and sunsets, and general group gatherings.



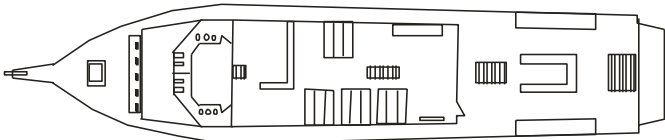
Half the upper deck is covered so guests can be sheltered from the sun.



The other half is not covered so guests can enjoy the sun.

---

### THE MAIN DECK (from Bow to Stern)



The bow offers a spacious area for a spectacular view of the sea and wildlife.



Comfortable seating provides for a relaxing experience while underway.



The companionway allows easy access to the bathrooms/showers, salon and stern.



There are 2 separate bathroom facilities, one set for men and one set for women.





Two showers are conveniently located in each bathroom facility.



Omar, the ships chef, prepares a variety of international dishes. However, his specialty is Mexican cuisine and each day offers fresh meats, vegetables, fruits and flavors from around the world. We won't even mention his fresh seafood dishes!



The salon is spacious, comfortable and inviting.



The entertainment area offers the comfort of home.



A flat screen TV can be used to review the photos shot of the day or to offer presentations.



The aft deck is designed for diving and snorkeling with benches and storage bins for guests.



Thoughtfully designed to accommodate the needs of divers and snorkelers.



Steps from the aft deck leading down to the swim grid makes it easy for getting on and off the ship.



The swim grid also features 2 dive ladders.



Ideally designed for divers and snorkellers.

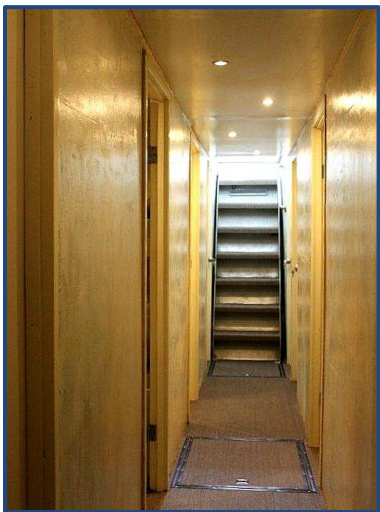
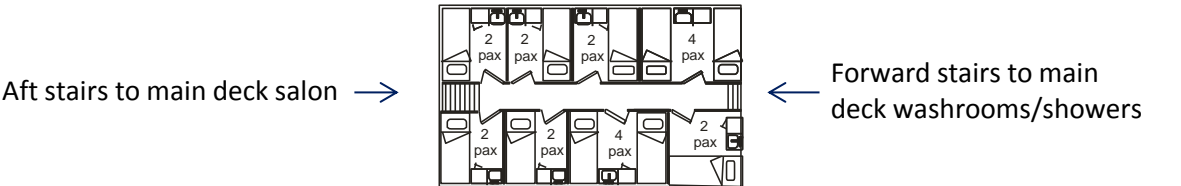


SHIP TO SHORE TRANSPORT - pangas

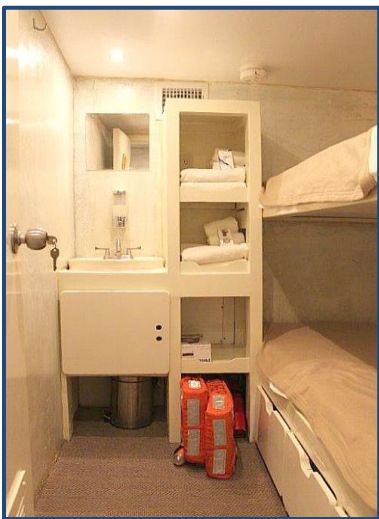


The MV Adventure tows 2 x 28’ pangas complete with lifejackets and 4 stroke engines to minimize the noise of the engines during close up encounters with the wildlife.

THE LOWER DECK – accommodations



Stairs leading from the main deck salon to the lower deck cabins.



The staterooms come equipped with air conditioning, sink, vanity, drawers and cupboards for unpacking your belongings.



Each stateroom bunk has its own plug ins, reading lamp and the mattresses are made of memory foam.



Sink, vanity and cupboards.



Imagine going to work every day with a view like this from your office window.

*Looking forward to sharing my office with you, see you onboard!*